



March Newsletter

It has been a positive and productive month here at Playtime at Port, with plenty happening across our service and many wonderful moments of growth for both children and educators.

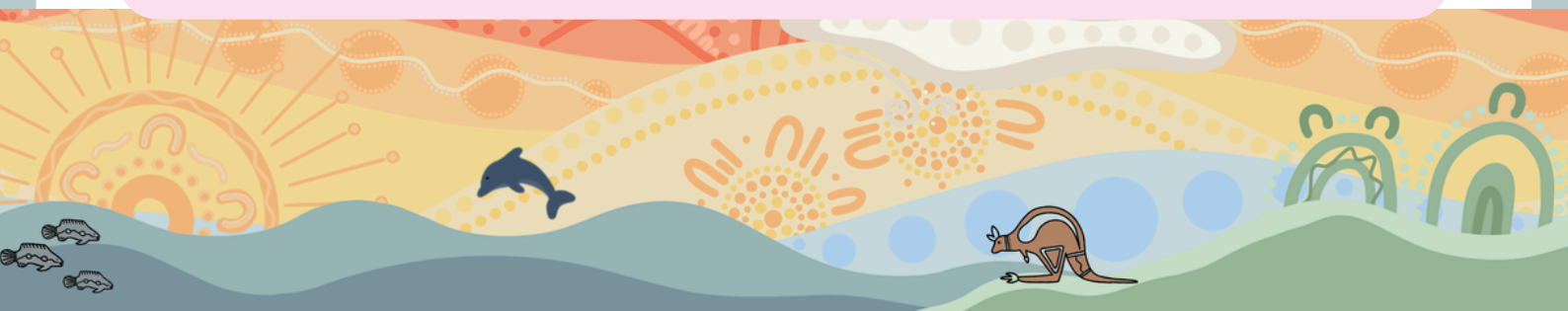
Ellie is recovering wonderfully following surgery and we are very much looking forward to welcoming her back after our Easter break. In the meantime, we thank families for the support and kindness shown during her time away.

Our service is also looking ahead to a special community event, with an Easter Afternoon planned for **Thursday 2nd of April at 3pm**. We are excited to share a fun afternoon with you all filled with easter inspired experiences and the start of a Playtime community art project live on the day.

Across Playtime, there have also been some staffing changes within our Wauchope service, creating new opportunities across both services. We are pleased that Mel will continue supporting our Port service in her new role as Educational Leader, where she will be present two days each week following Ellie's return from personal leave. Mel has already made a beautiful impact within our service through her calm guidance, fresh ideas and strong focus on meaningful learning experiences for children. We look forward to continuing to build on these ideas and embedding them into everyday practice across our service.

Over the past month, we have also welcomed ongoing support from Adam from Creative Education & Support, who has been spending time within our service supporting reflective practice and strengthening our inclusive approaches. Adam holds his Certificate III in Early Childhood Education and Care as well as a Certificate II in Allied Health, and his guidance has been valuable in helping our team continue learning, remain open to new perspectives, and further strengthen practices that support every child to feel safe, included and capable within our environment.

As always, we thank our families for being part of our journey and look forward to the exciting months ahead.





Bug Exploration 'Help me find lady bugs.'



Our explorers have been discovering many bugs in the backyard. From this interest our Educators have been extending the children's learning through many experiences through the month of March. Baking ladybug cookies and making ladybug jelly. To developing fine motor skills and exploring their creativity, the children were able to make their own lady bugs using a variety of materials.

UPCOMING DATES TO REMEMBER

-  Crystals last day 1st April
-  Easter Afternoon 2nd April 3 - 4 pm
-  Mothers Day Garden Party 8th May 3.30-4.30pm



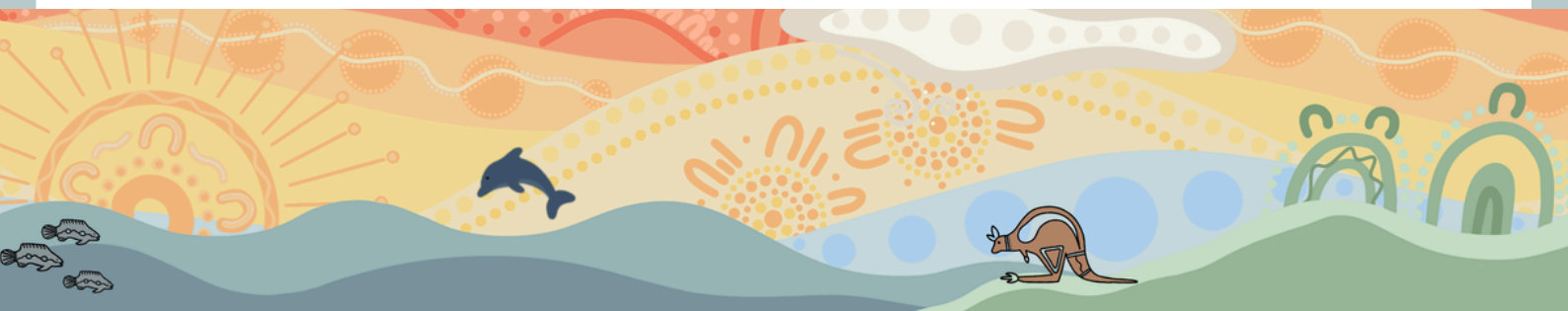
LINKED COMMUNITY SERVICES "LINKY LITTLES"



Having recently met with the team from Linked Community and viewed the transport service "Linky Littles" firsthand, we feel excited about what this may offer our children as part of future curriculum experiences. Access to community outings creates valuable opportunities for children to build confidence in new environments, strengthen social connections, and experience learning in meaningful real-life settings.

As we begin planning for this, families will soon receive a poll inviting feedback on the types of excursions you would love to see included as part of our program. Your ideas will help shape experiences that reflect both children's interests and the opportunities within our local community.

We see great value in children being able to connect with places, people and spaces around them, and look forward to gradually introducing experiences that support curiosity, belonging and a deeper understanding of the world around them.



MANDATORY NATIONAL CHILD SAFETY TRAINING (GECCKO)

As part of important national reforms to strengthen child safety in early childhood services, the Australian Government now requires all adults involved in early childhood education and care to complete mandatory child safety training through the Geccko online learning platform.

This means that everyone who works in or supports our centre, from educators and coordinators to volunteers and students – will be completing this training as part of their role. The training has been developed by the Queensland Government and the Australian Centre for Child Protection and is provided free of charge.

The purpose of this training is to make sure that all staff have up-to-date knowledge and skills to keep children safe, understand signs of harm, and respond appropriately when children's wellbeing is at risk. Families should feel confident that this is part of a national approach to strengthening safety and quality across all early childhood services.

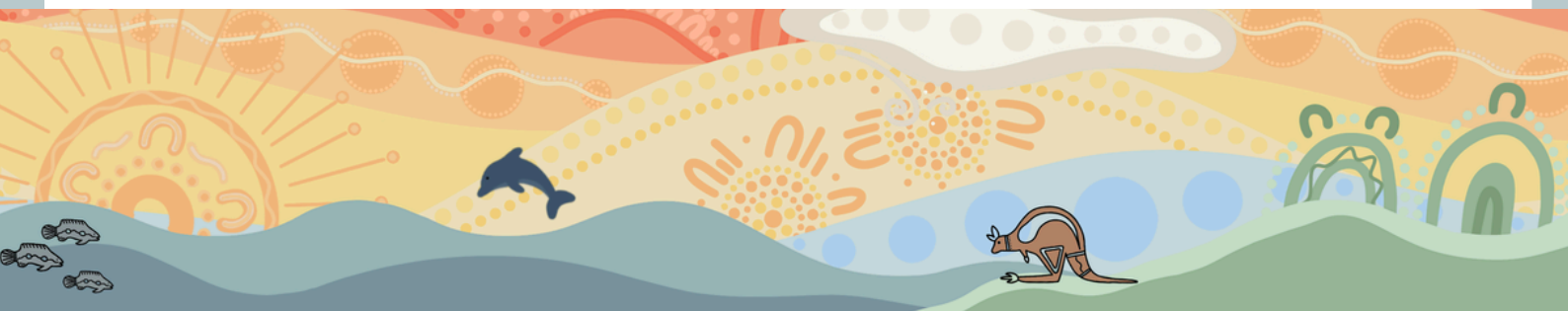
The first part of the training became available from 27 February 2026, and further modules will be rolled out through the year

DONT FORGET TO UPDATE CCS

As we begin the new year, please take a moment to check your Child Care Subsidy (CCS) details and update your hours if needed. Remember, if your child turns 6, the Second Child Additional Subsidy no longer applies, or if CCS hours are unused, they may be reduced. Keeping your information up to date helps avoid unexpected fees or debt at tax time.

HEALTH & IMMUNISATION UPDATES

Please ensure your child's immunisation and health records are current and notify us of any changes. Immunisation statements can be added directly to OWNA, making it quick and easy for you to keep records up to date. If your child is unwell, arrangements for collection must be made promptly. This helps us maintain a healthy and safe environment for all children and staff.



The NSW Early Learning Commission



What Has Changed?

The NSW Early Learning Commission is now the independent regulator for early childhood education and care services in NSW.

This replaces the previous regulatory role managed within the NSW Department of Education. Early childhood education and care (ECEC) services are now regulated by a dedicated, independent body focused solely on early learning.

What does the Commission do?

- Approves early learning services before they operate
- Monitors services to ensure ongoing compliance
- Conducts Assessment and Rating visits
- Investigates serious incidents and complaints

Why was the Commission created?

The Commission was established to:

- Strengthen child safety and wellbeing
- Increase transparency and accountability
- Improve public confidence in early learning services
- Provide clearer and more consistent regulatory oversight
- Support quality improvement across the sector



What does this mean for families?

The Commission helps ensure that early learning services:

- Provide safe and nurturing environments
- Meet national quality standards
- Follow child protection requirements
- Maintain appropriate staffing and supervision
- Respond appropriately to complaints and concerns

What does this mean for Educators

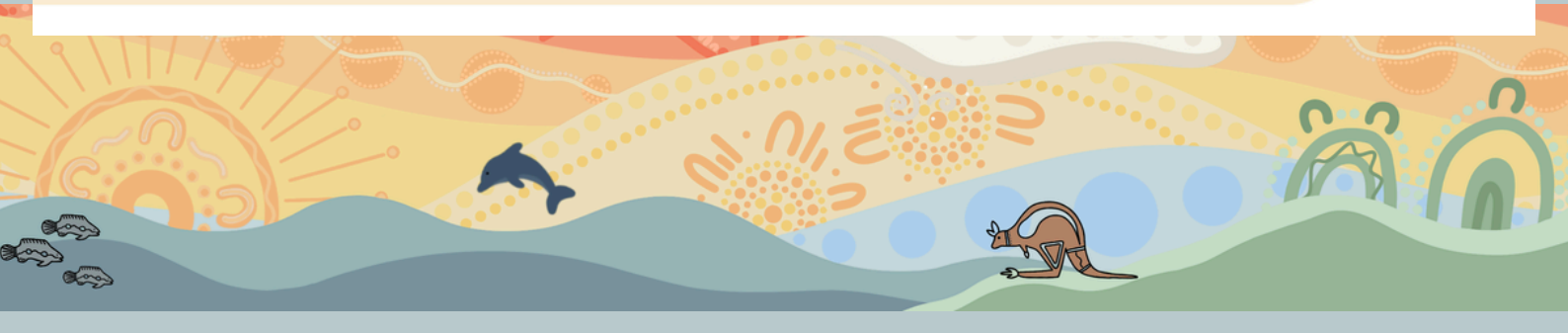
- Your regulatory contact is now the NSW Early Learning Commission
- Stronger emphasis on child safety, governance, and compliance
- Continued alignment with the National Quality Framework

NSW Early Learning Commission



Email: information@earlylearningcommission.nsw.gov.au

Phone: 1800 619 113



HOW PLAYTIME ENSURES THE SAFETY OF YOUR CHILDREN



Being child safe in Early Childhood Education and Care means creating an environment where children are protected, respected, and empowered, with their safety and wellbeing at the very centre of all decisions and practices.

It goes far beyond just supervision; it's about embedding child protection into the culture of the service.

QUALIFIED & CARING EDUCATORS

The National Regulations require at least 50% of educators to hold or be working towards a Diploma.

At Playtime, almost 90% of our team (23 out of 26 educators) are studying or hold a Diploma or higher.

We are proud to have 2 Bachelor-qualified educators and 2 more halfway there.

This reflects our strong commitment to high-quality early education, led by knowledgeable, and passionate professionals.

CHILD PROTECTION & SAFETY TRAINING

All educators have completed Child Protection Refresher Training in June.

We critically reflect on the safety of our indoor, outdoor, and online environments.

Policies and procedures are in place to safeguard every child's wellbeing and digital footprint.

MORE EDUCATORS THAN REQUIRED

Ratio requirement: 7 educators per day
Playtime roster: 13 educators per day

Nearly double the minimum requirement, ensuring children receive the attention and care they deserve

ONGOING REFLECTION AND IMPROVEMENT

We regularly review our practices to ensure Playtime is a place where children feel safe, respected, and protected.

STRONG INDUCTION PROCESS

We've strengthened our practices with a comprehensive interview and induction process, mandatory Working With Children Checks, and regular child protection training for all educators.

At Playtime, child safety isn't just a requirement – it's our commitment